

ClearBlade IoT Core & GCP Automated Migration

CONFIDENTIAL - NOT FOR DISTRIBUTION



ClearBlade Introduction	01
ClearBlade IoT Core	02
Google IoT Migration	03
Google Marketplace Offerings	04
ClearBlade Google Cloud Integrations	05
ClearBlade Additional Offerings	06
Questions	07

01

ClearBlade Introduction

 **CLEARBLADE** is an **IoT, Edge, and AI**
software company

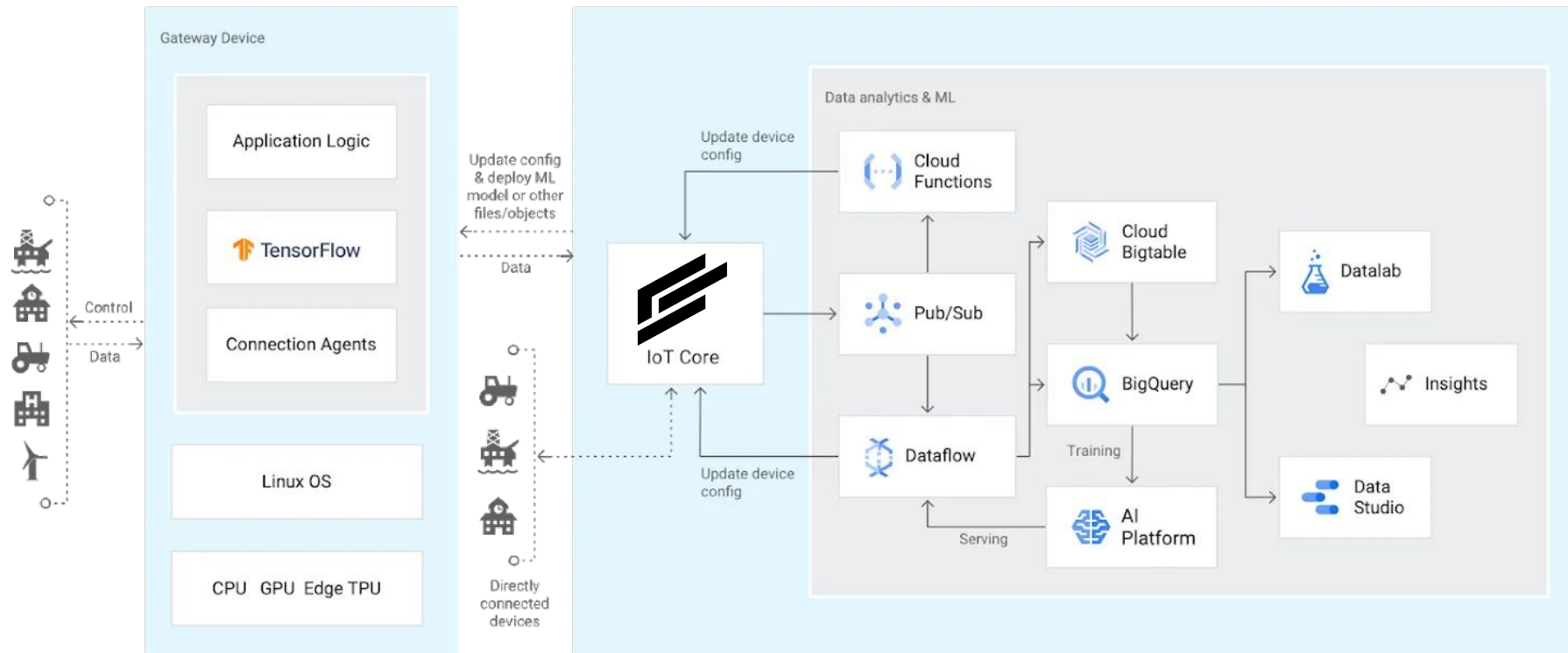
Solution Overview

- ClearBlade is an IoT, Edge computing and AI software company to enable running secure, real-time and scalable IoT applications
- Built as a Universal Platform for several industries including Transportation, Manufacturing, Oil & Gas, Healthcare, Energy, Smart cities
- Edge Platform to get data from several sources and centralizing information in the Cloud
- Fully Automated, Quick Deployment and Fast-track migration to GCP

02

ClearBlade IoT Core

ClearBlade is complementary to GCP Cloud Architecture



- Devices partner
- Application partners
- Service partners

ClearBlade capabilities easily map to Google IoT Core

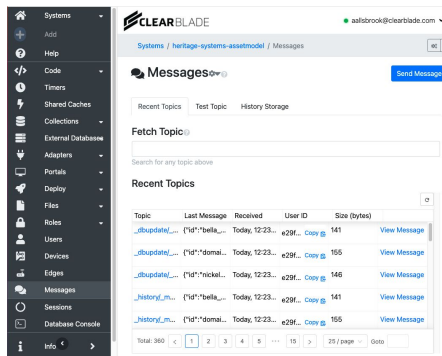
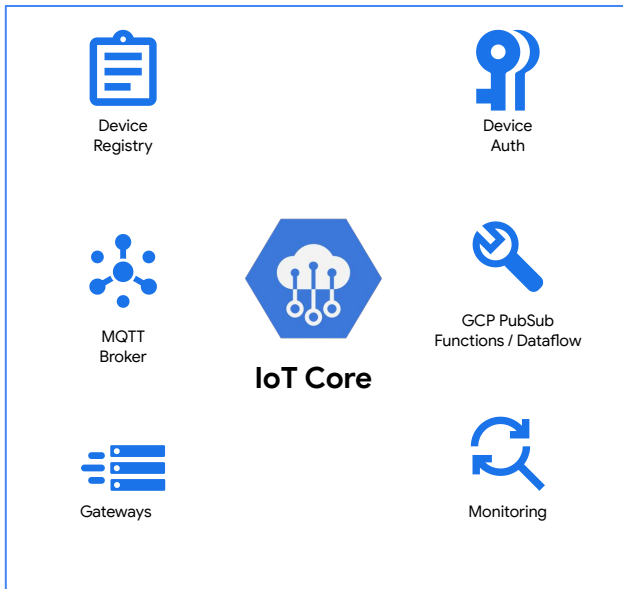



Diagram illustrating the mapping of ClearBlade capabilities to Google IoT Core services:

- Device Registry
- Device Auth
- MQTT Broker
- IoT Core
- GCP PubSub / Functions / Dataflow
- Gateways
- Monitoring



- Scalable
- Fast
- Flexible

Any GCP Cloud Region

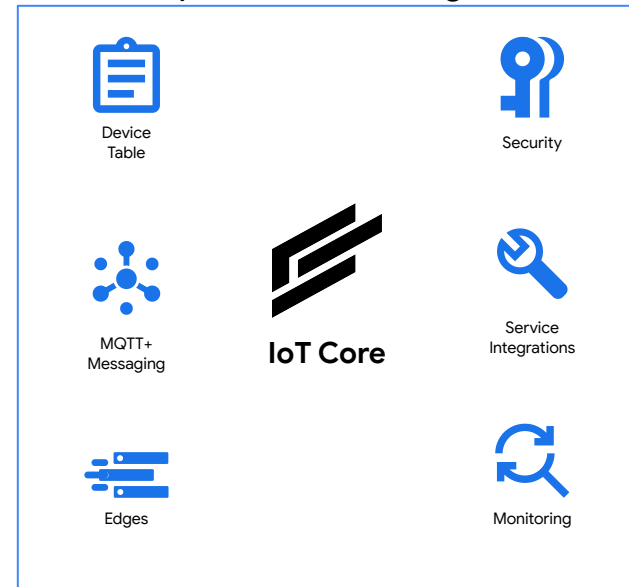


Diagram illustrating the mapping of ClearBlade capabilities to Google IoT Core services in any GCP Cloud Region:

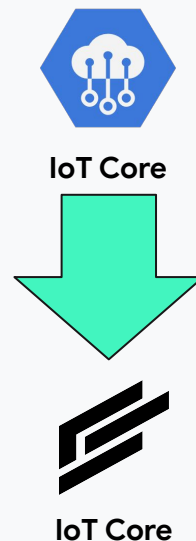
- Device Table
- Security
- MQTT+ Messaging
- IoT Core
- Service Integrations
- Edges
- Monitoring

03

Google IoT Migration

ClearBlade provides a simple “1-click” Migration

- **Low Impact**
 - No cloud services impacted
 - Device updates
- **Fully Automated**
 - Device Registries
 - Any Cloud Region
 - Authorization
 - Pub/Sub Topic Mappings
- **Flexible Deployment**
 - Customer Project Areas
 - Hosted by ClearBlade



- Stage 1 (4 days)
 - Define Test Set
 - Configure Monitoring
 - Migrate Test Set
 - Training
 - Validate
- Stage 2 (1 day)
 - Full Set
 - Acceptance

04

ClearBlade Google Marketplace Offerings

ClearBlade IoT Core available in the Marketplace

IoT Core Pricing (ClearBlade hosted)

- .0045 per MB per month
- First 250MB Free
- Tiers available

Additional Terms Available for

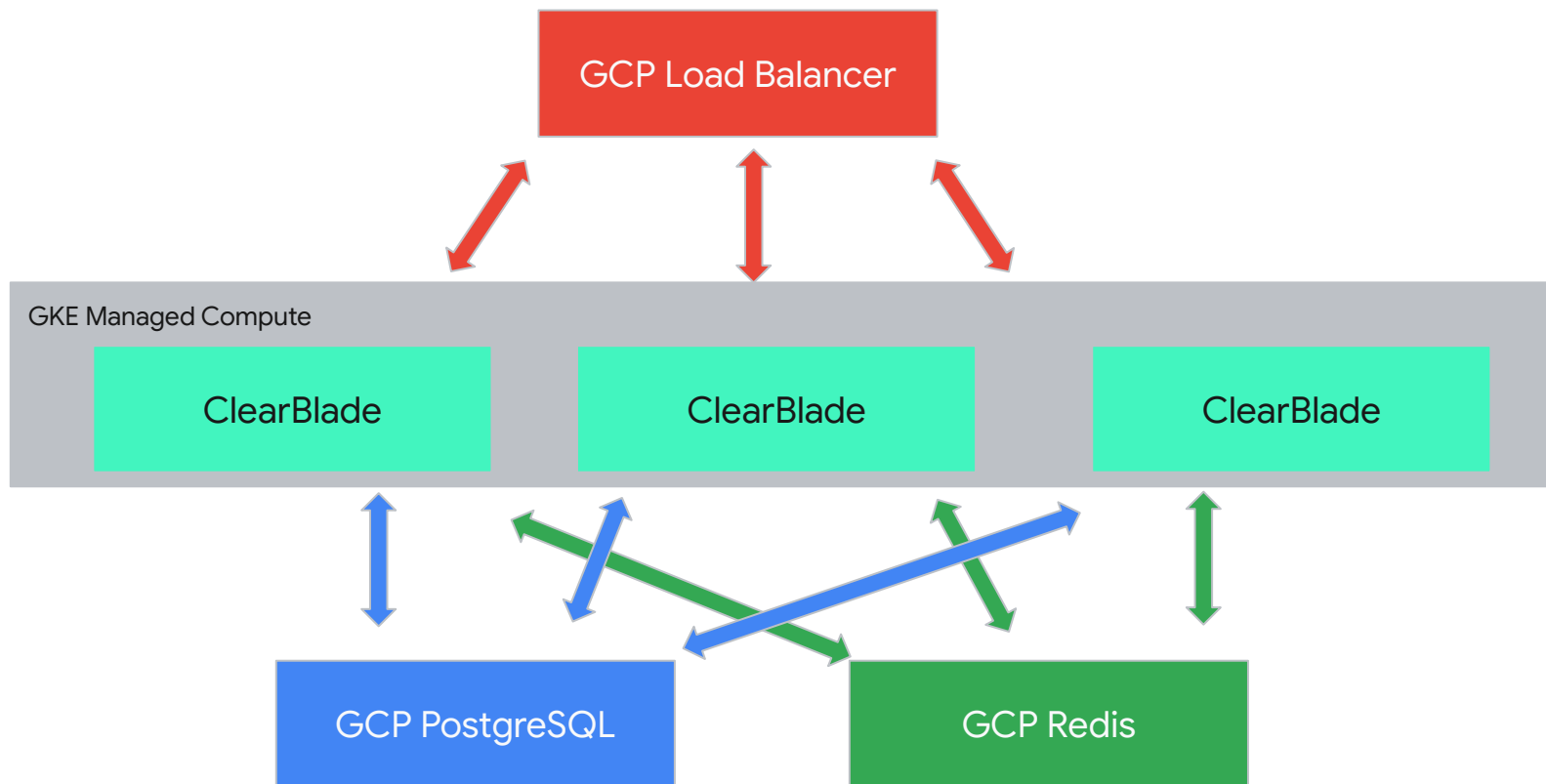
- Customer Environments
- Enterprise Tiers

Monthly data volume	Price per MB
up to 250 MB	\$0.00
250 MB to 250 GB	\$0.0045
250 GB to 5 TB	\$0.0020
5 TB	\$0.00045

05

ClearBlade Google Cloud Integrations

ClearBlade includes additional GCP cloud services



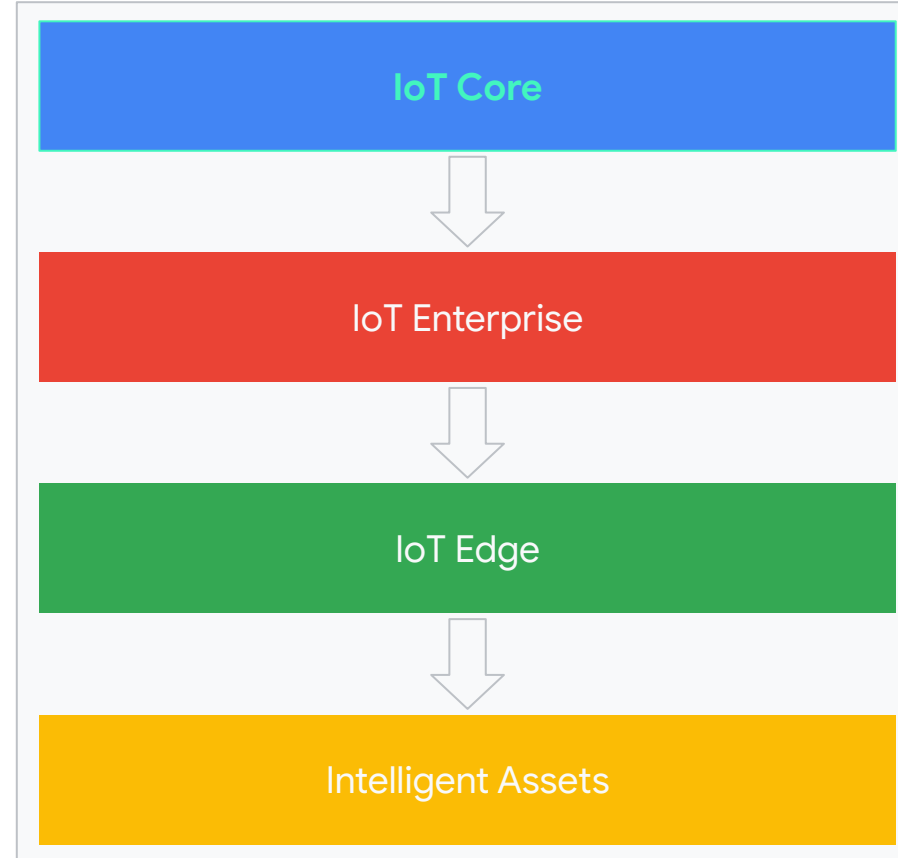
06

ClearBlade Additional Offerings

ClearBlade IoT Core

IoT Core Features

- Device Table
- Security
- MQTT+ Messaging
- Service Integrations
- Edges
- Monitoring



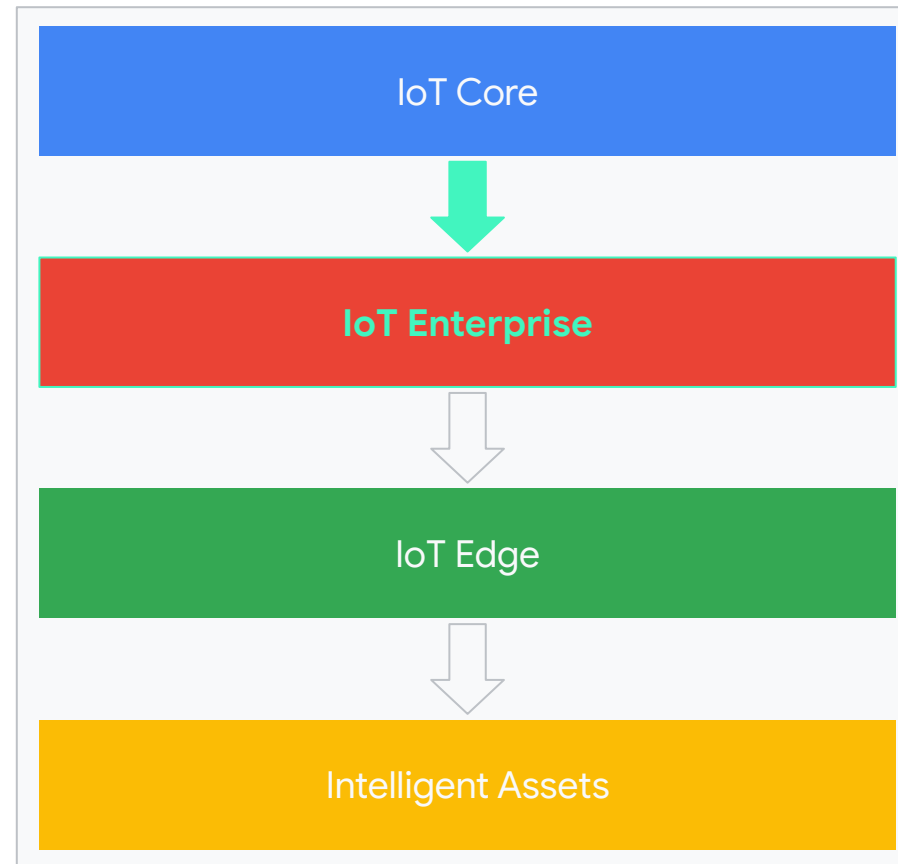
ClearBlade IoT Enterprise

IoT Enterprise Features

- Enhanced Permissions
- IoT Code Engine (Cloud/Edge)
- Edge Orchestration
- Data and Files
 - Buckets
 - Big Query
 - Streams and Microservices

Also Includes Enhanced IoT Modules

- IoT Portals
- IoT Protocol Adapters
- IoT AI Engine



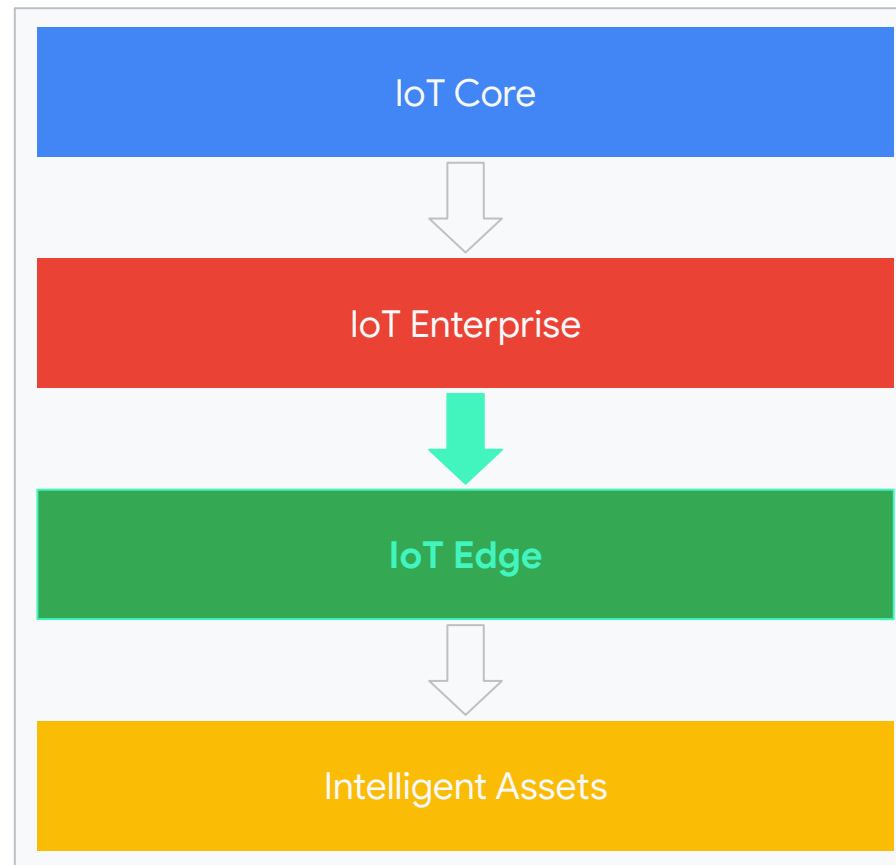
ClearBlade IoT Edge

IoT Edge - Full IoT Enterprise Stack at the Edge!

- Enhanced Permissions
- IoT Code Engine (Cloud/Edge)
- Data and Files
- Cloud/Edge Synchronization

Also Includes Enhanced IoT Modules

- IoT Edge Portals
- IoT Edge Protocol Adapters
- IoT Edge AI Engine
- IoT Network Connectivity
- IoT Out of the Box Gateways



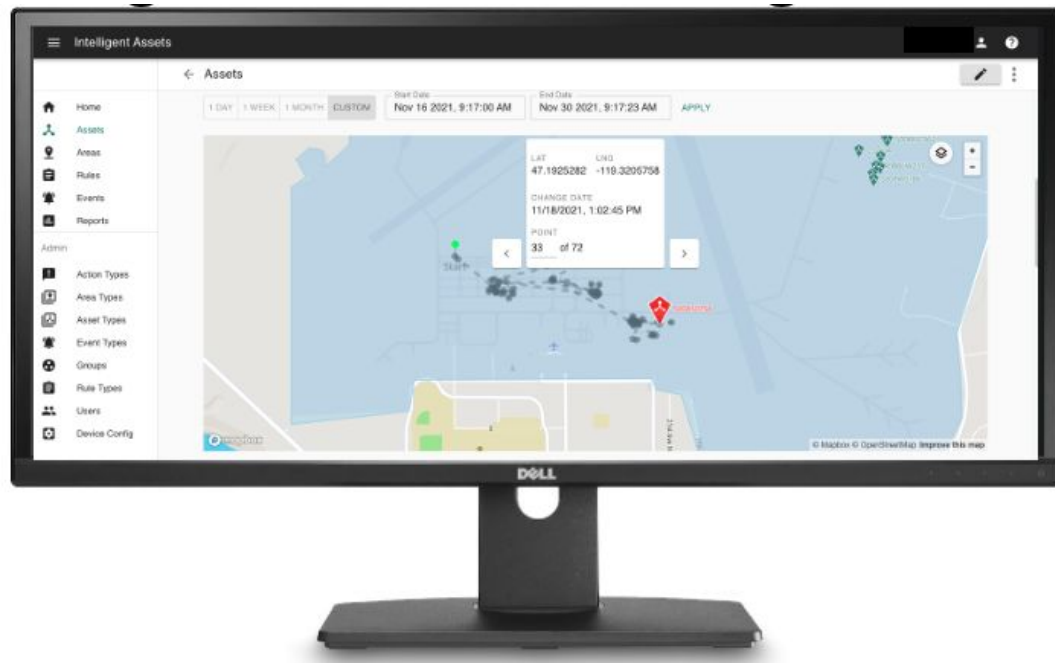
ClearBlade **Intelligent Assets**



Intelligent Assets

- **Intelligent Assets**

- No code application for operators
- Monitor/Track/Control any asset
- Edge integrated
 - Rules
 - AI
 - Data storage
- Proven across multiple industries
 - Aerospace
 - Rail
 - Manufacturing



07

Questions

Casey Beauchamp
ClearBlade Director of Partnerships
cbeauchamp@clearblade.com