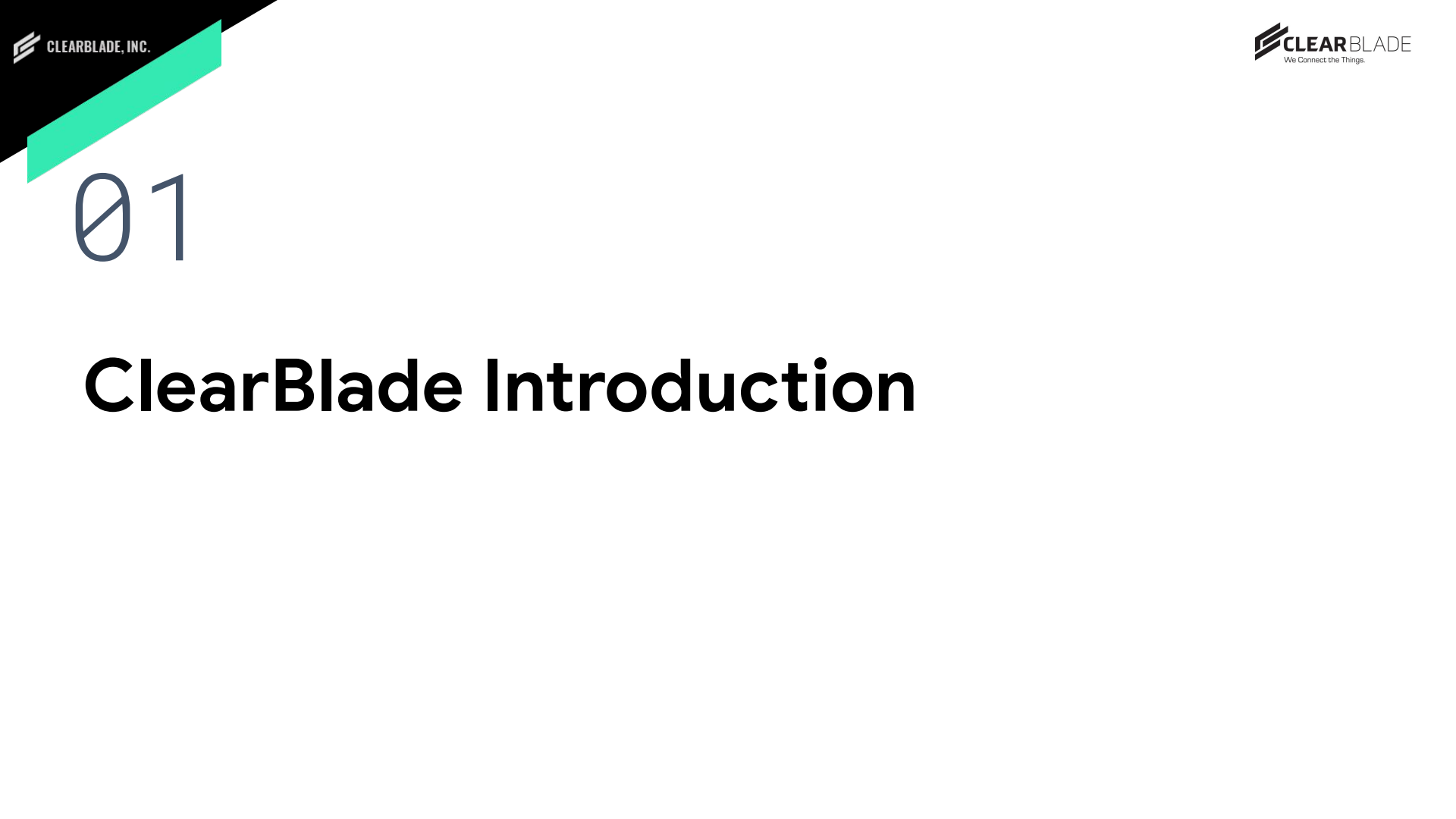


ClearBlade IoT Core & GCP Automated Migration

V5 - January 25, 2023

Public Version

ClearBlade Introduction	01
ClearBlade IoT Core	02
Google IoT Migration	03
Google Marketplace Offerings	04
ClearBlade Google Cloud Integrations	05
ClearBlade Additional Offerings	06
Questions	07



01

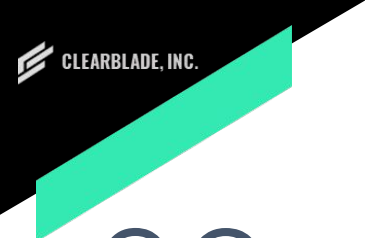
ClearBlade Introduction



 **CLEAR**BLADE is an IoT, Edge, and
AI software company

Solution Overview

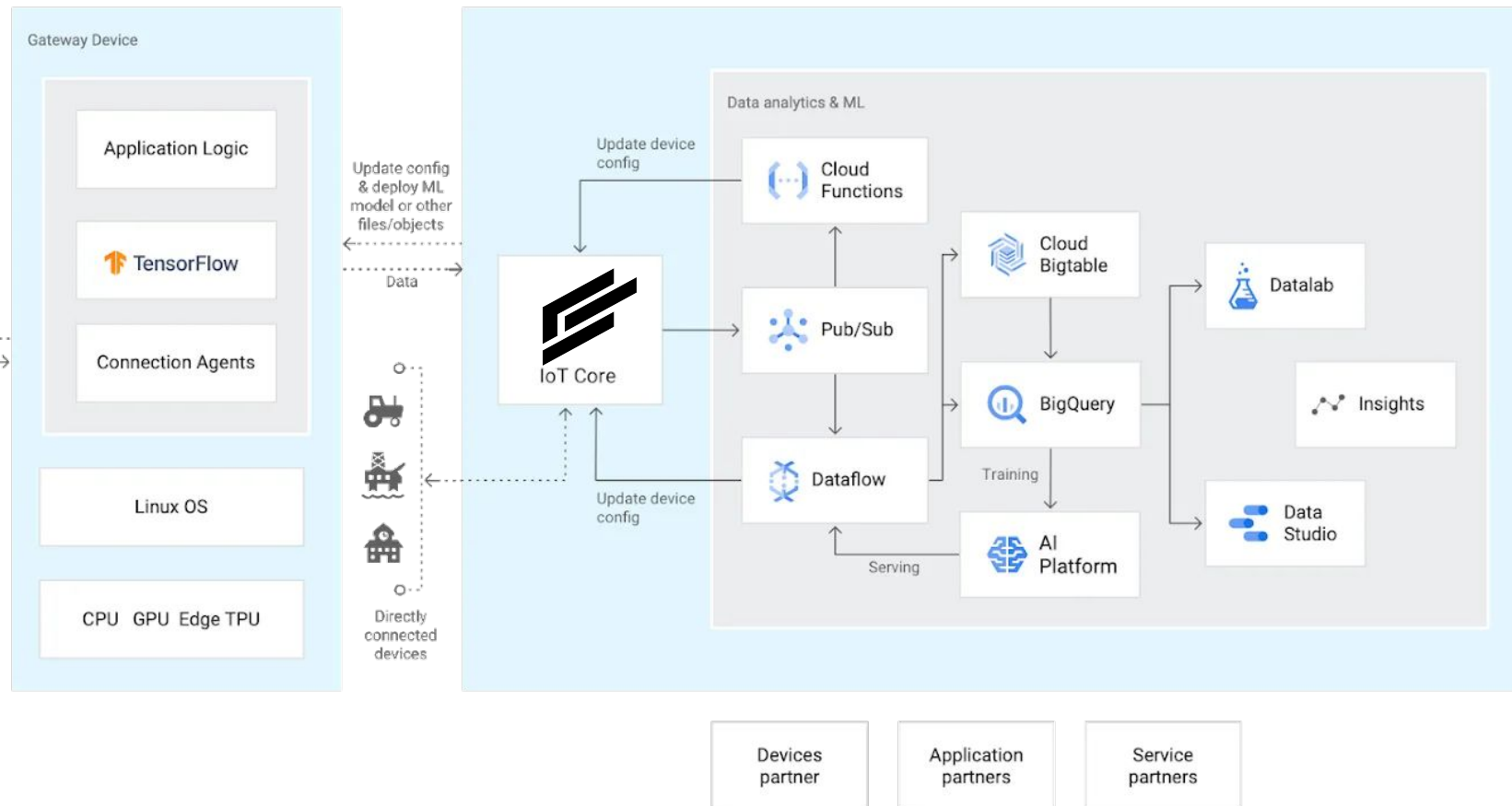
- ClearBlade is an IoT, Edge computing and AI software company to enable running secure, real-time and scalable IoT applications
- Built as a Universal Platform for several industries including Transportation, Manufacturing, Oil & Gas, Healthcare, Energy, Smart cities
- Edge Platform to get data from several sources and centralizing information in the Cloud
- Fully Automated, Quick Deployment and Fast-track migration to GCP



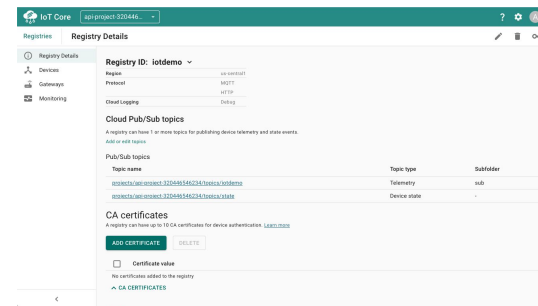
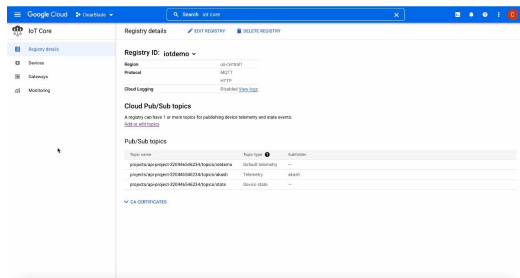
02

ClearBlade IoT Core

ClearBlade is complementary to GCP Cloud Architecture



ClearBlade capabilities easily map to Google IoT Core



Device
Registry



Device
Auth



MQTT
Broker



IoT Core



GCP PubSub
Functions / Dataflow



Gateways



Monitoring



- Scalable
- Fast
- Flexible



Device
Registry



Matched
Google's
Authentication



MQTT+
Messaging



IoT Core



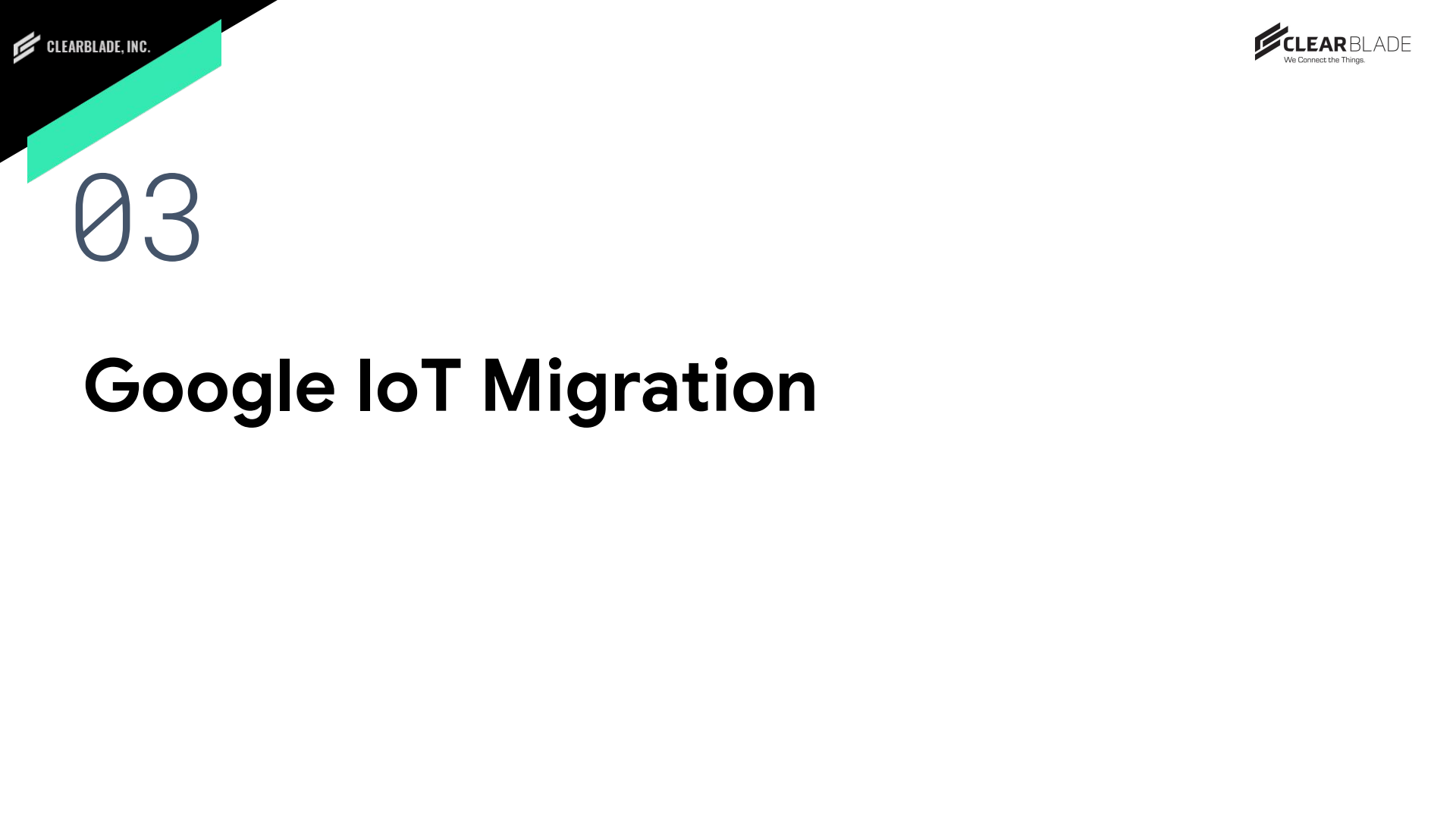
Service
Integrations



Gateways



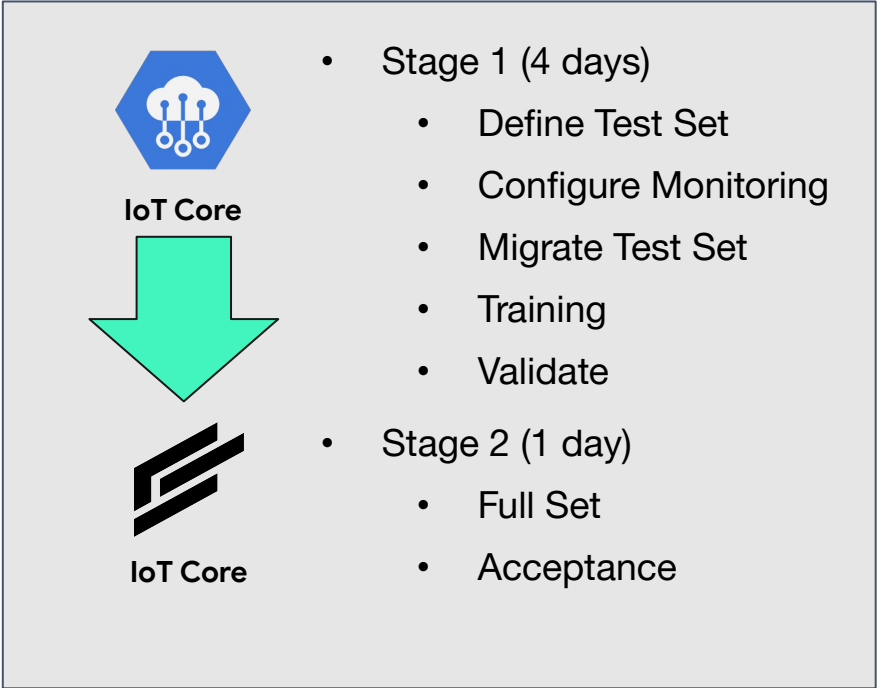
Monitoring



03

Google IoT Migration

- **Low Impact**
 - No cloud services impacted
 - Device updates
- **Fully Automated**
 - Device Registries
 - Any Cloud Region
 - Authorization
 - Pub/Sub Topic Mappings
- **Flexible Deployment**
 - Customer Project Areas
 - Hosted by ClearBlade



July 25th

Start Development

September 13th - September 26th

Customers begin Production Migrations

January 26th

100 successfully migrated Google IoT Core customers



August 29th - September 12th

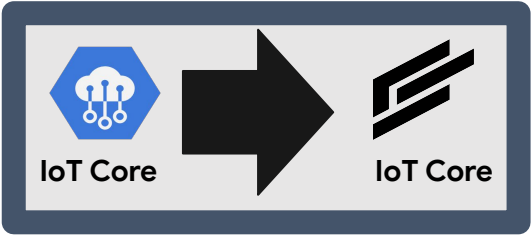
First Pilot Migration Completed
(expected two (2) weeks)

October 15th

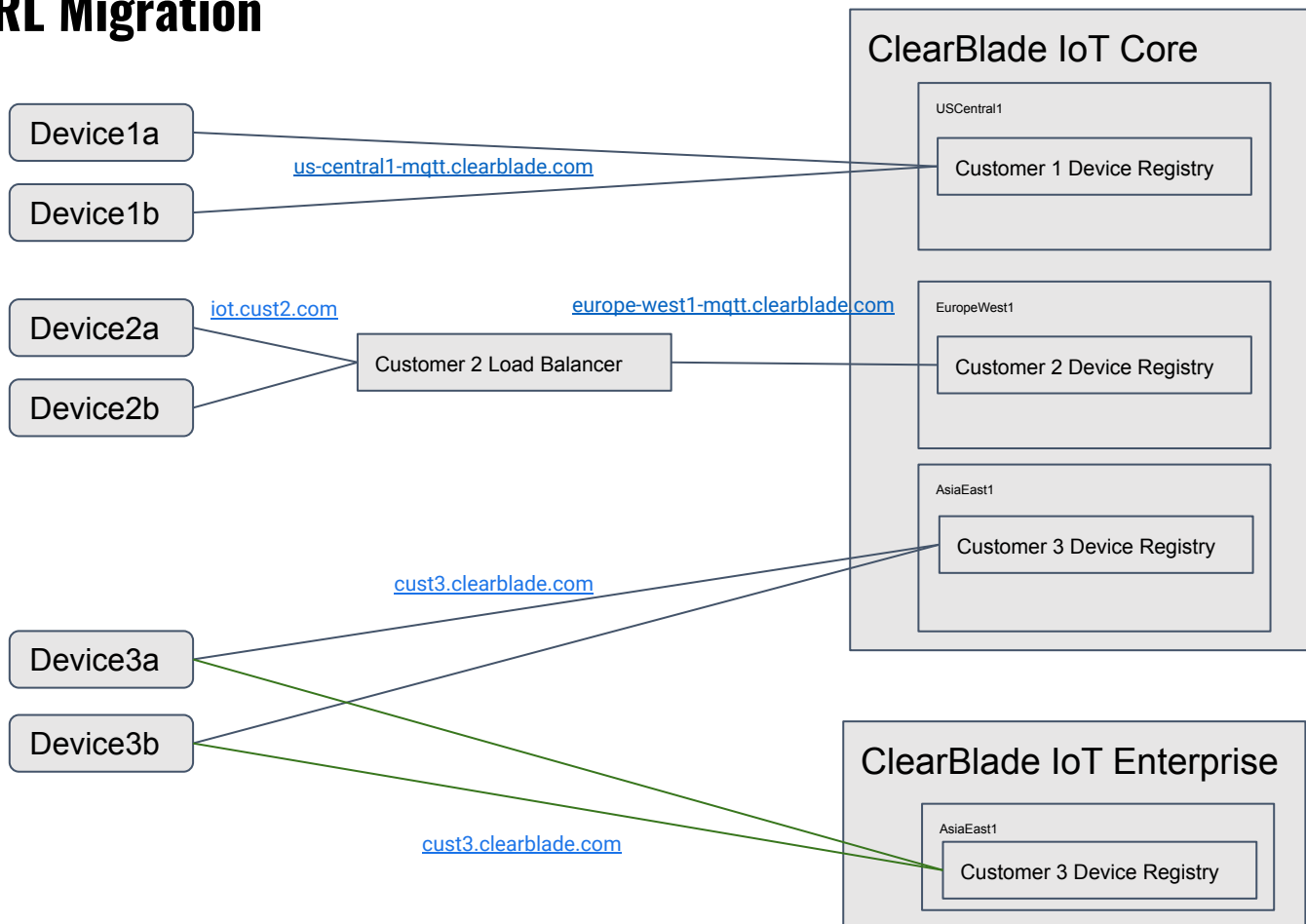
General Availability on Google
Marketplace

August 16th

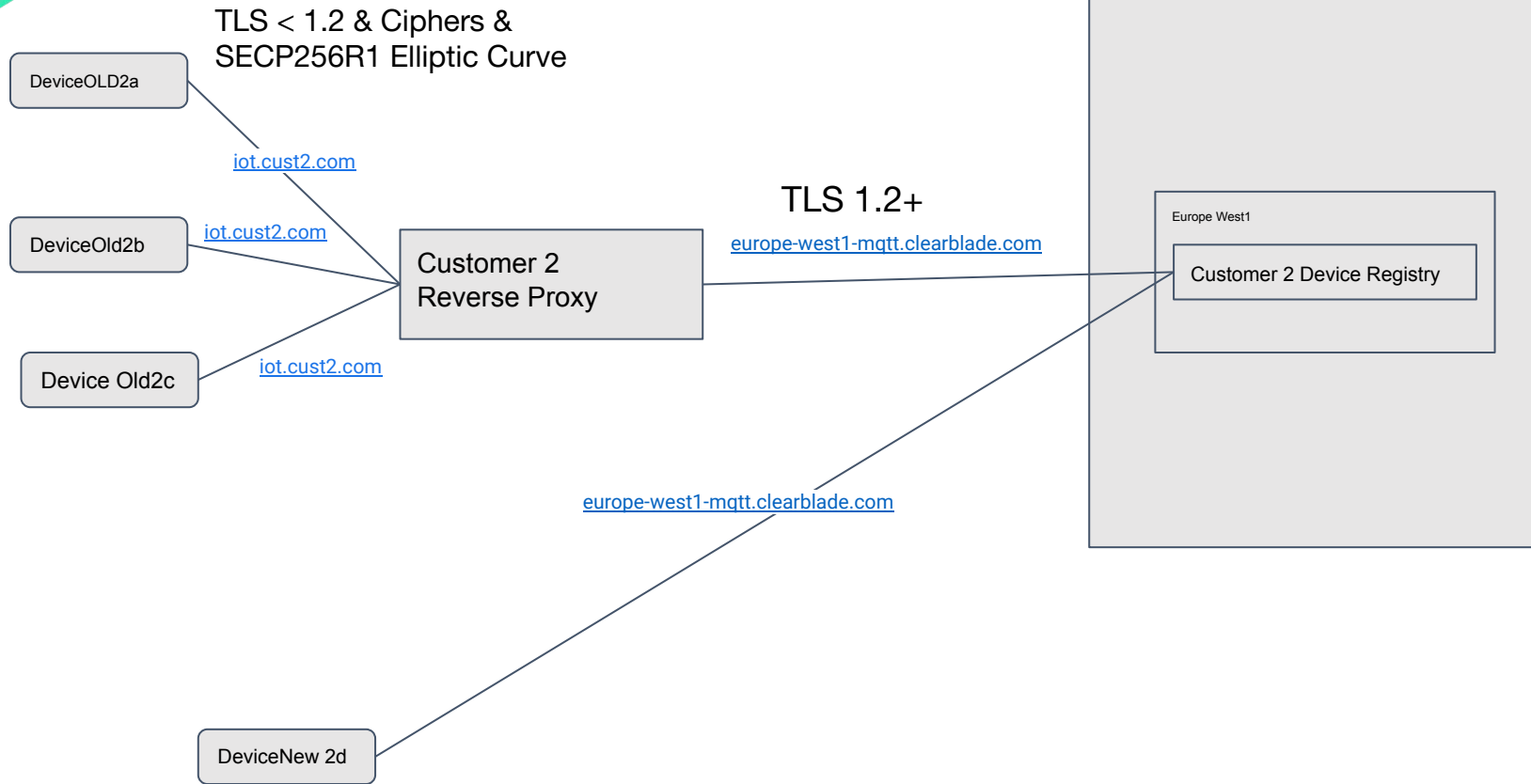
Official Google IoT Core Migration
Deadline



URI / URL Migration



URI / URL Migration - Legacy Devices



Retargeting Devices

Replacement of MQTT URL / URI

- Googleapis.com



- Clearblade.com

Update for Root CA on device

- Google Pseudo self signed



- DigiCert Global Root CA

New SDK forks

Retargeting Devices



Created by Aaron Allisbrook

Last updated: Dec 12, 2022 by Jeff Slavin · 1 min read · 18 people viewed

While all information is copied during a migration to make authentication and data flow unchanged, it is necessary to retarget each device and gateway to the new ClearBlade IoT Core offering. Information regarding that change is [here](#).

Production URL / URLs

MQTT (regional)

us-central1-mqtt.clearblade.com
europe-west1-mqtt.clearblade.com
asia-east1-mqtt.clearblade.com
ports available **8883** and **443**

HTTP (regional - for device calls)

<https://us-central1.clearblade.com>
<https://europe-west1.clearblade.com>
<https://asia-east1.clearblade.com>
port **443**

HTTP (global - for list registry calls)

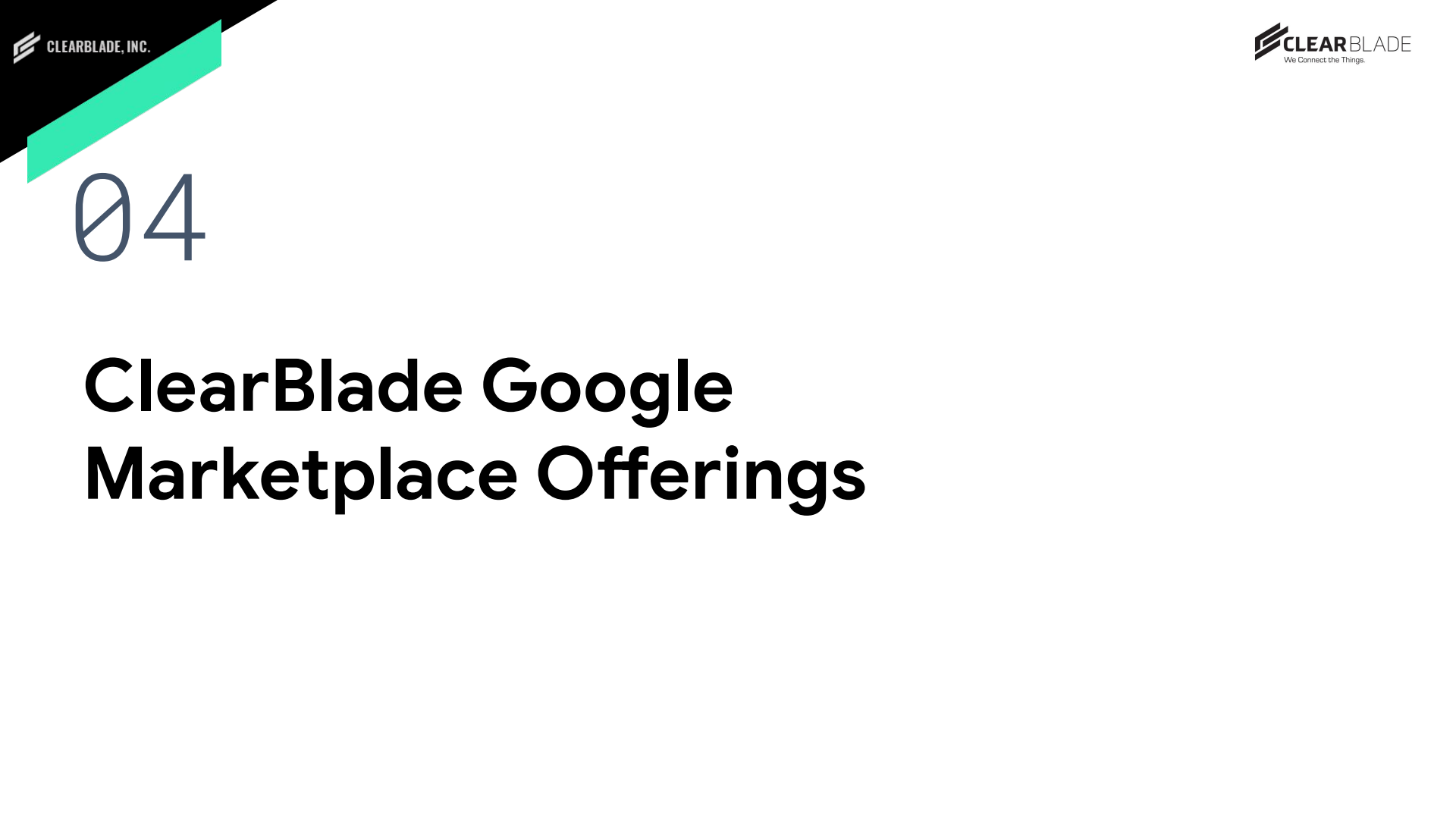
<https://iot.clearblade.com>

Root CA

The ClearBlade IoT Core environments leverage DigiCert root certificates for SSL / TLS termination. The current Root CA from DigiCert can be downloaded [here](#).

Replacement SDKS

ClearBlade is providing [SDKs](#) for drop-in replacement.



04


ClearBlade Google Marketplace Offerings

IoT Core Pricing (ClearBlade hosted)

Monthly data volume	Price per MB
up to 250 MB	\$0.00
250 MB to 250 GB	\$0.0045
250 GB to 5 TB	\$0.0020
5 TB	\$0.00045

Additional Terms Available for

- Customer Environments
- Enterprise Tiers



ClearBlade IoT

[ClearBlade Inc.](#)

We connect the things.

[VIEW ALL PLANS](#)

[OVERVIEW](#)[PRICING](#)[DOCUMENTATION](#)

Overview

ClearBlade is an IoT, Edge, and AI Software company driving enterprise digital transformation through its IoT Core, IoT Enterprise, and Intelligent Assets offerings on Google Cloud. ClearBlade offers fully scalable, secure, flexible, and autonomous solutions that enable companies to ingest, analyze, adapt, and act on any data in real-time and at extreme scale.

[Learn more](#)

Additional details

Runs on: [ClearBlade Inc. Cloud Servers](#)

Type: [SaaS & APIs](#)

Last updated: 8/15/22

Category: [Big data](#), [Analytics](#), [Machine learning](#), [Compute](#)

About managed services

Managed Services are fully hosted, managed, and supported by the service providers. Although you register with the service provider to use the service, Google handles all billing.

- **IoT Core**
 - Priced by MB
 - Monthly
- **IoT Enterprise**
 - Per vCPU
 - Per Edges Pricing Available
- **IoT Enterprise w/ Intelligent Assets**
 - Per vCPU
 - Supports Multiple Applications
 - Per Edges Pricing Available

Pricing

	IoT Core	IoT Enterprise	IoT Enterprise with Intelligent Assets
	Free + usage fee	Free + usage fee	Free + usage fee
	Subscription Period* 1 month - Free + usage fee	Subscription Period* 1 month - Free + usage fee	Subscription Period* 1 month - Free + usage fee
	SELECT	SELECT	SELECT
Device Registry	Yes	Yes	Yes
Certificate Authentication	Yes	Yes	Yes
Highly Scalable Rest & MQTT Communication	Yes	Yes	Yes
Google Pub/Sub Integration	Yes	Yes	Yes
Streaming/Microservice Engine		Yes	Yes
Realtime AI Engine		Yes	Yes
Data as a Service		Yes	Yes
Enhanced Permissions for Users & Devices		Yes	Yes
Edge Orchestration		Yes	Yes
Protocol Translation		Yes	Yes
Portal Visualizations		Yes	Yes
No Code IoT Application			Yes
Customizable Assets & Areas			Yes
Rules Engine, Events & Alerts			Yes
Dashboards & Reports			Yes
Mobile, Tablet, & Web Views			Yes

IoT Core Usage Fee

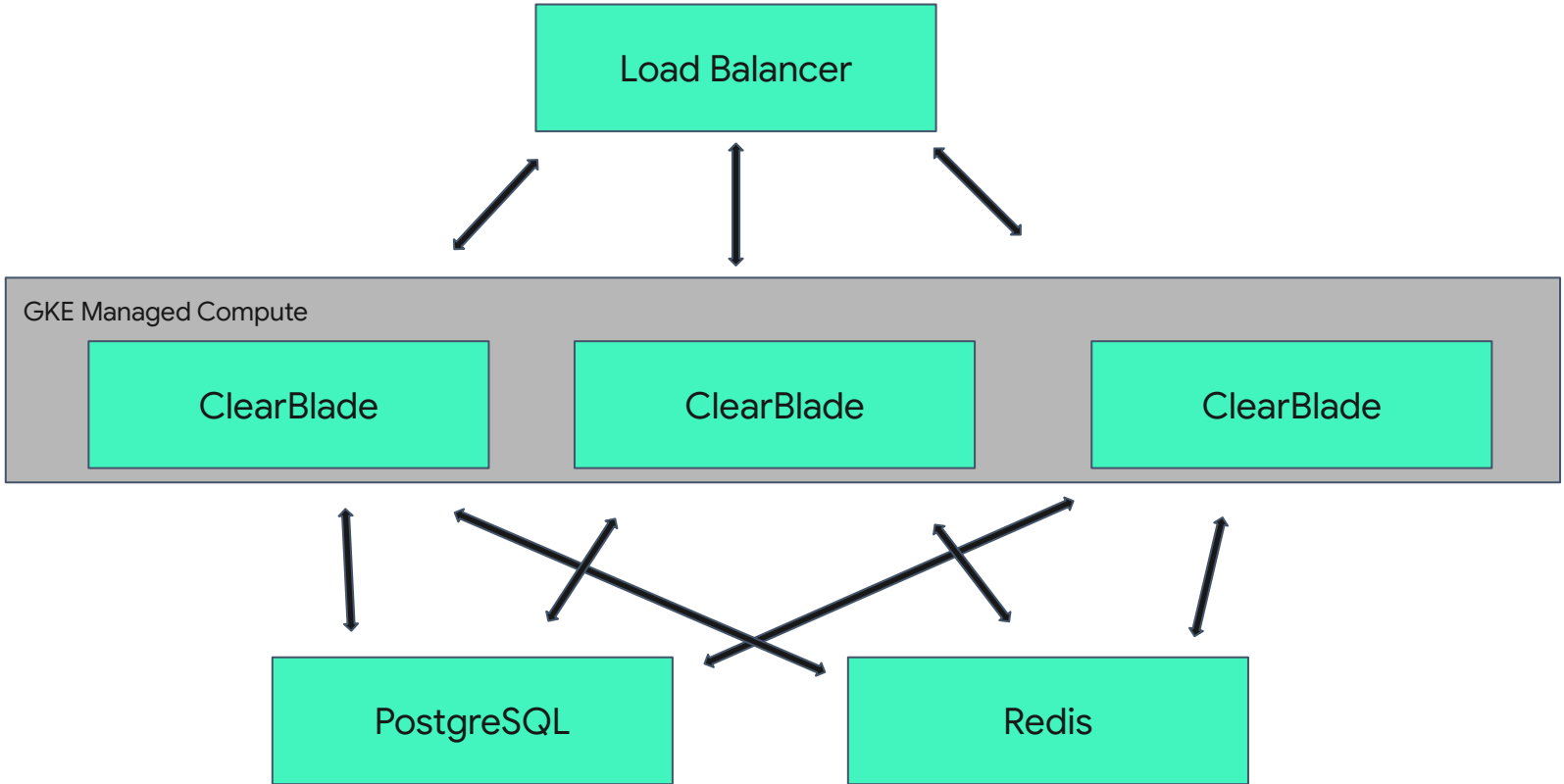
This plan charges for usage of certain services on top of the monthly fee. Usage fee is billed every month.

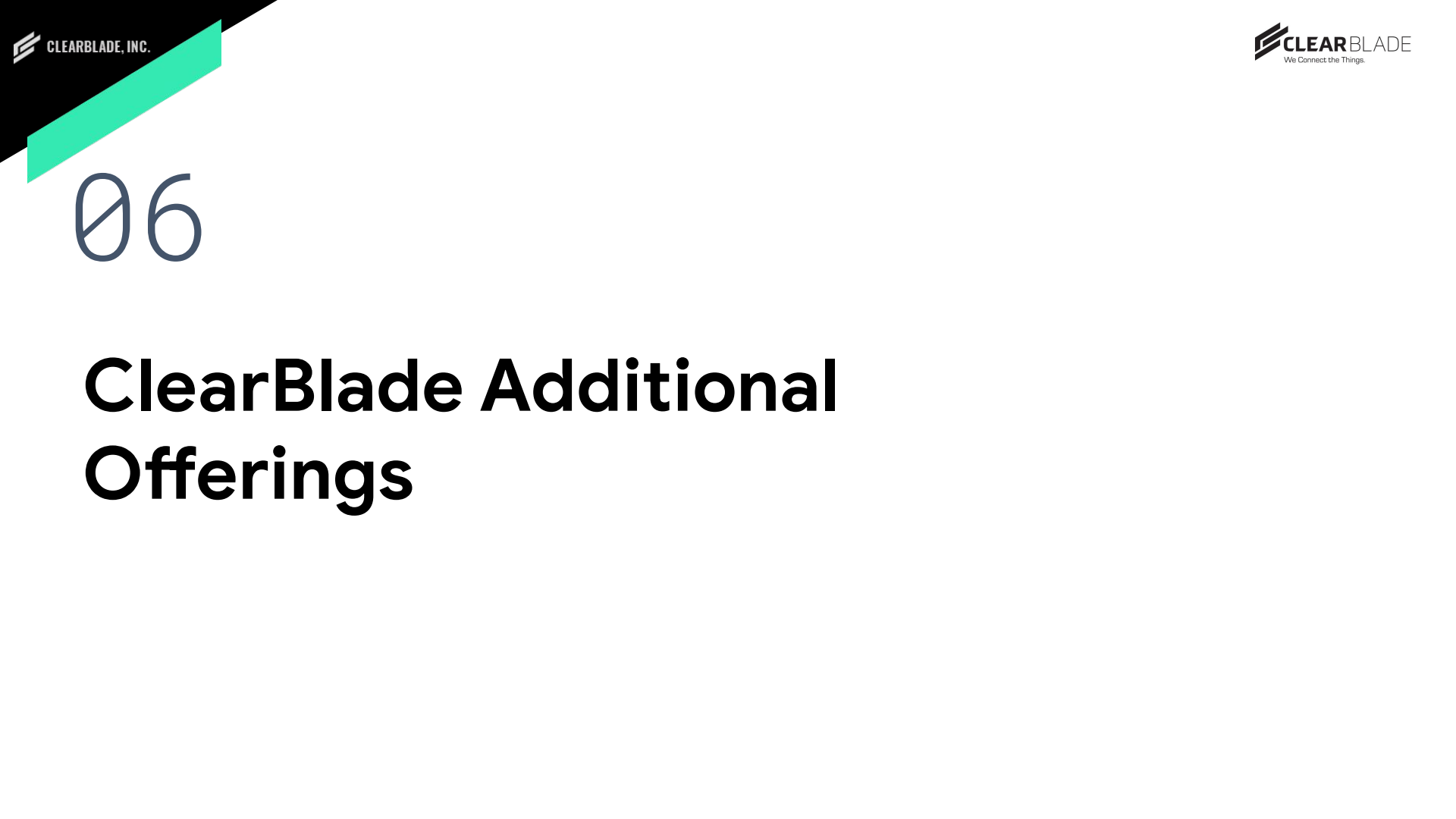
IoT Core Price per MB	FREE	TIER 1	TIER 2
	USD 0.00 /mebibyte	USD 0.0045 /mebibyte	USD 0.002 /mebibyte
	Starting after: 0 mebibyte/month	Starting after: 250 mebibyte/month	Starting after: 250K mebibyte/month



05

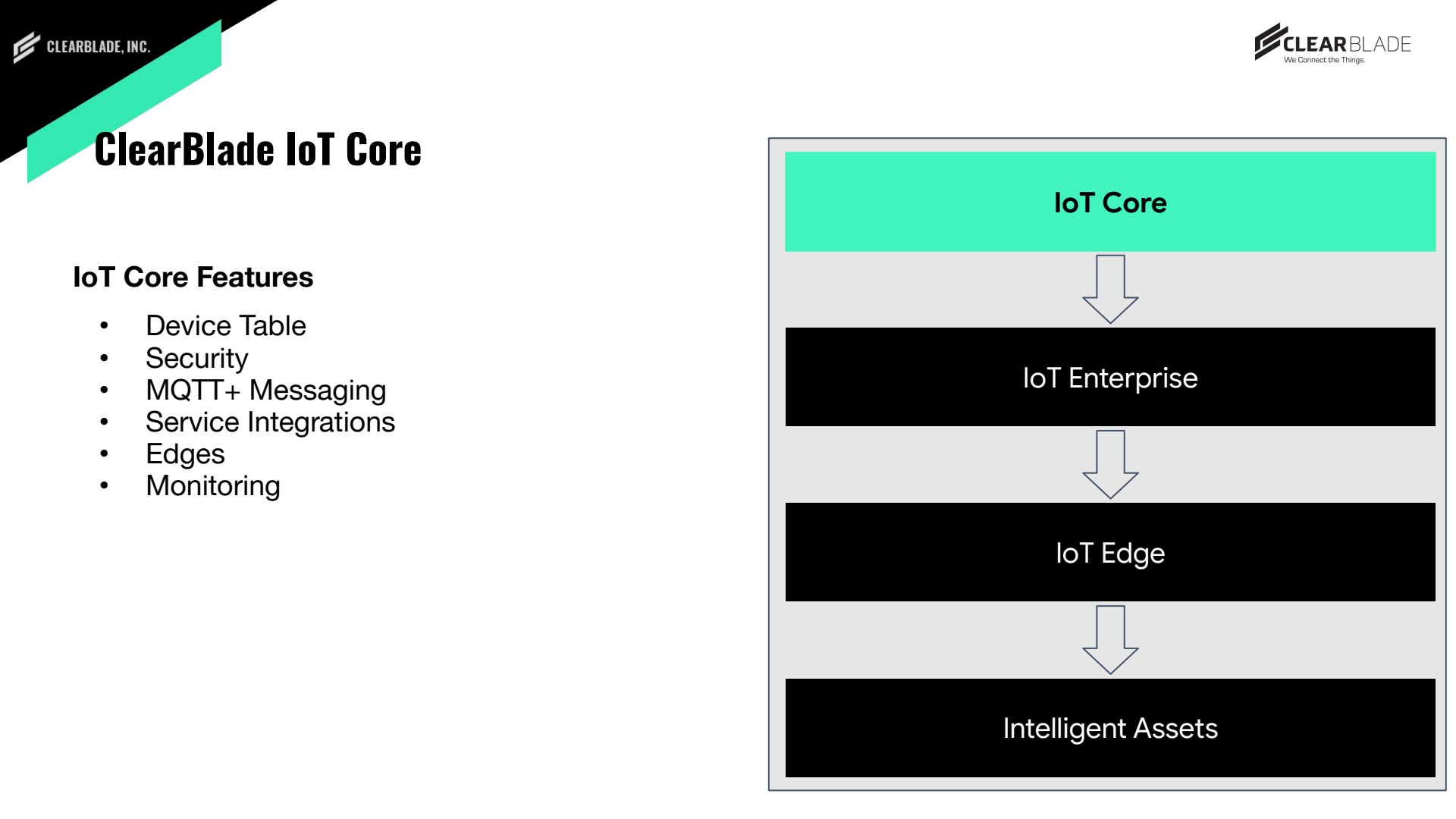
ClearBlade Google Cloud Integrations





06

ClearBlade Additional Offerings



ClearBlade IoT Core

IoT Core Features

- Device Table
- Security
- MQTT+ Messaging
- Service Integrations
- Edges
- Monitoring

IoT Core



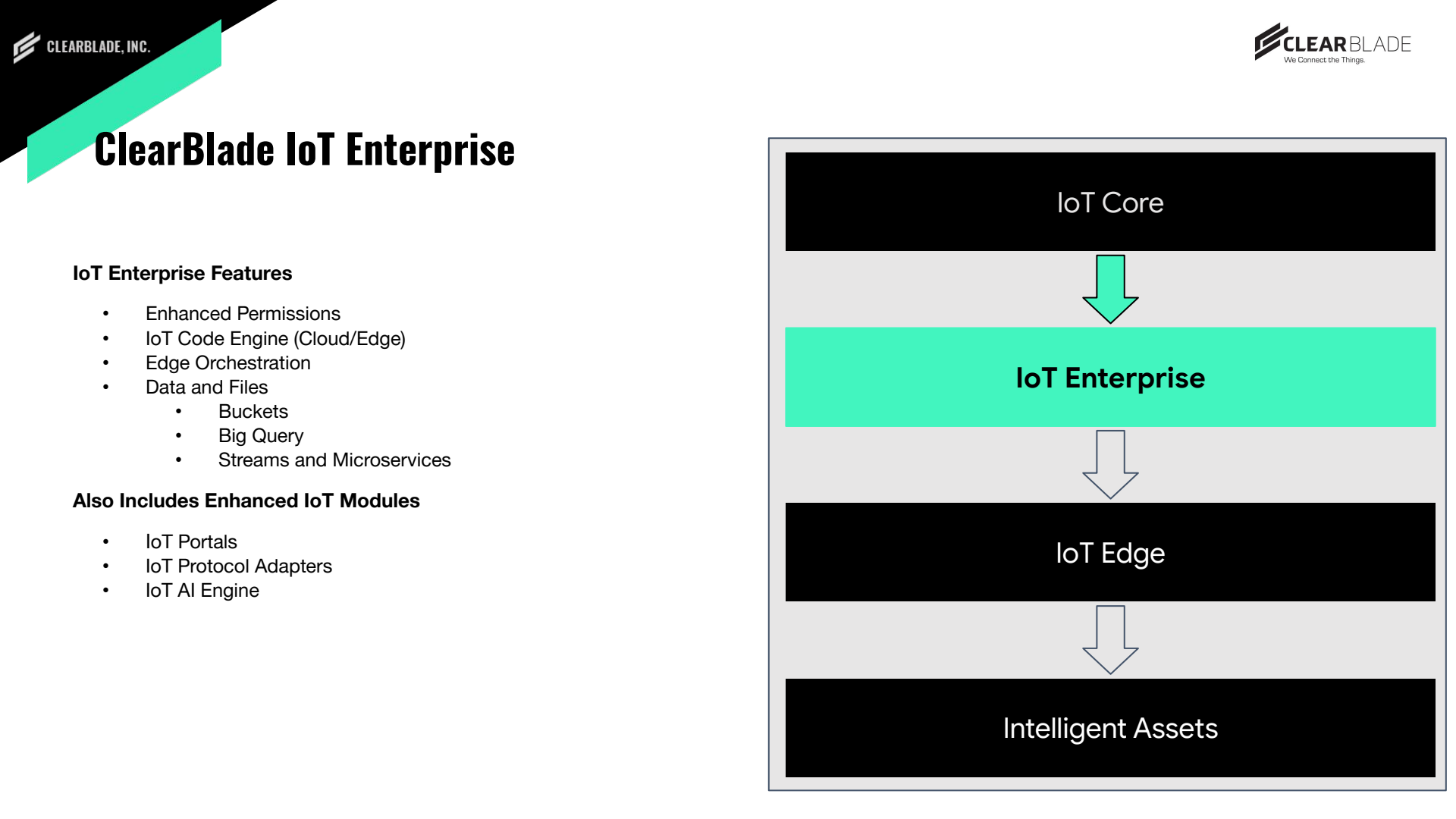
IoT Enterprise



IoT Edge



Intelligent Assets



ClearBlade IoT Enterprise

IoT Enterprise Features

- Enhanced Permissions
- IoT Code Engine (Cloud/Edge)
- Edge Orchestration
- Data and Files
 - Buckets
 - Big Query
 - Streams and Microservices

Also Includes Enhanced IoT Modules

- IoT Portals
- IoT Protocol Adapters
- IoT AI Engine



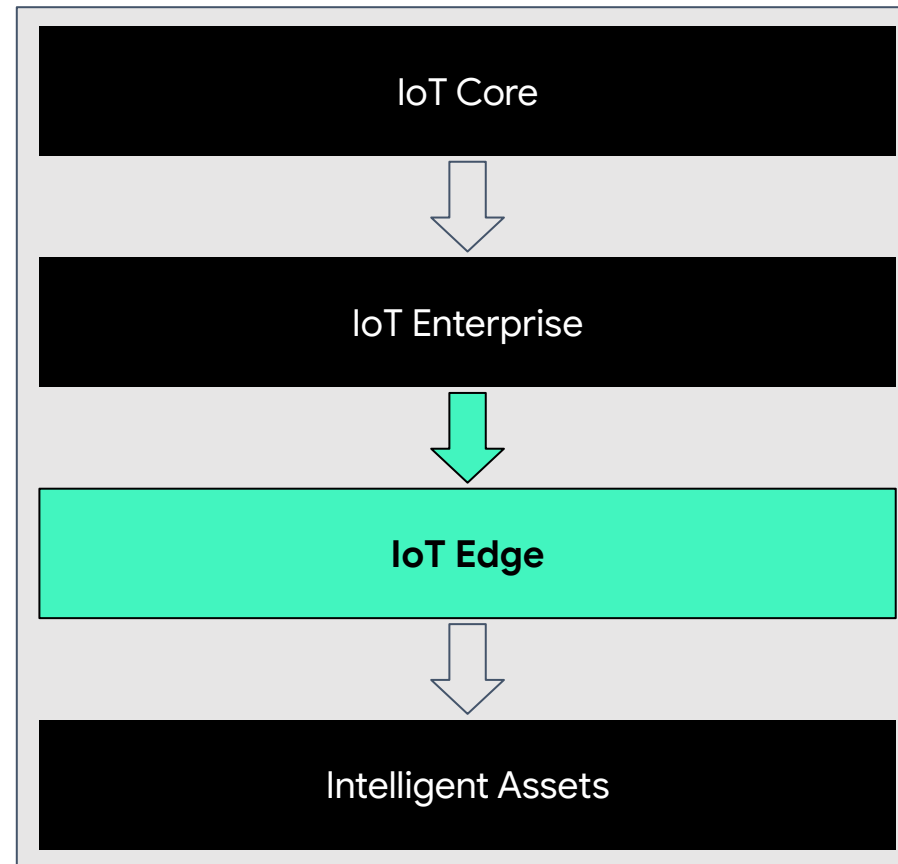
ClearBlade IoT Edge

IoT Edge - Full IoT Enterprise Stack at the Edge!

- Enhanced Permissions
- IoT Code Engine (Cloud/Edge)
- Data and Files
- Cloud/Edge Synchronization

Also Includes Enhanced IoT Modules

- IoT Edge Portals
- IoT Edge Protocol Adapters
- IoT Edge AI Engine
- IoT Network Connectivity
- IoT Out of the Box Gateways

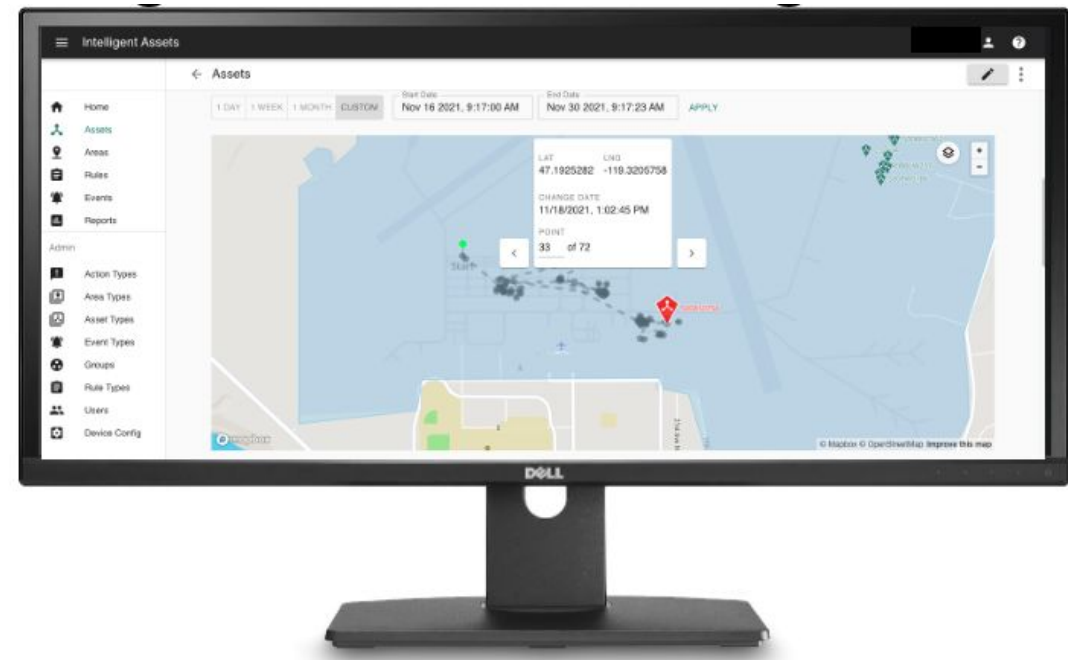




Intelligent Assets

Intelligent Assets

- No code application for operators
- Monitor/Track/Control any asset
- Edge integrated
 - Rules
 - AI
 - Data storage
- Proven across multiple industries
 - Aerospace
 - Rail
 - Manufacturing





07

Questions

Casey Beauchamp
ClearBlade Director of Partnerships
cbeauchamp@clearblade.com